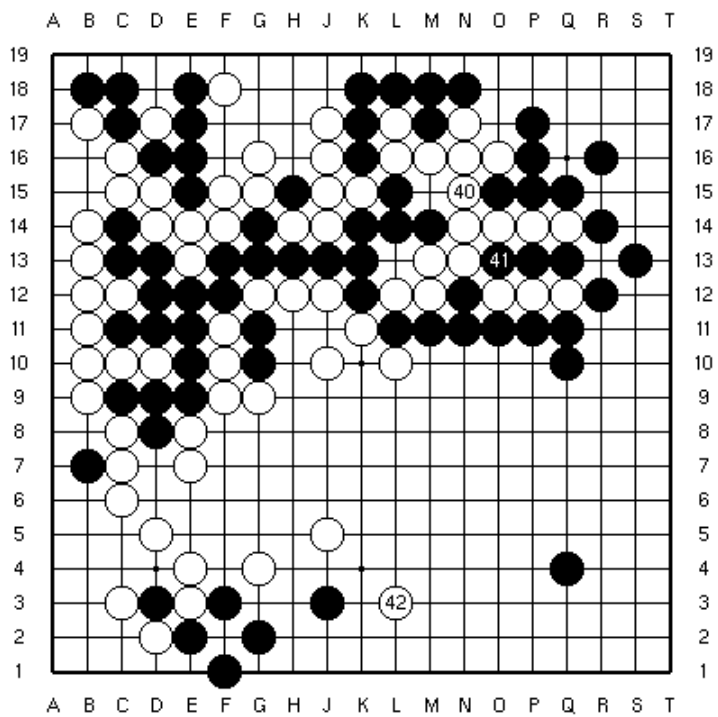


## Instructions

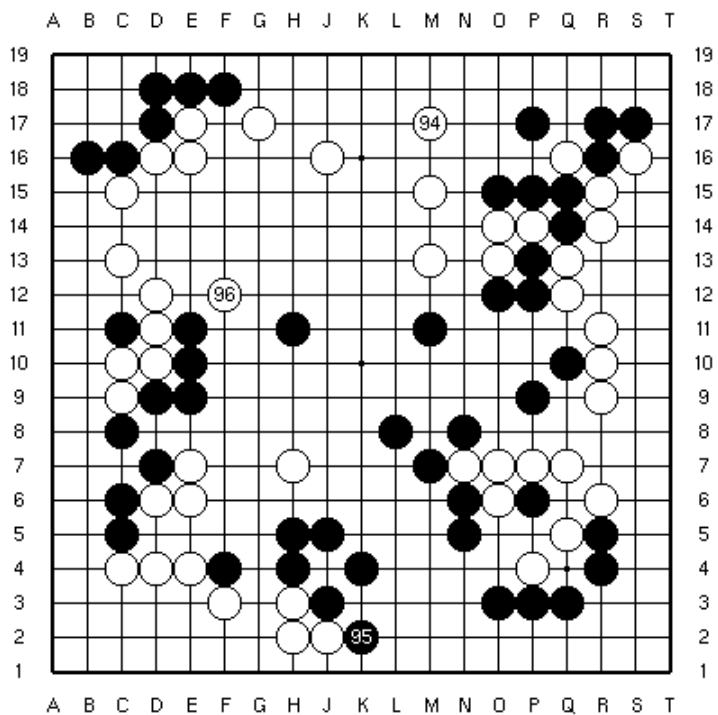
- Write your name, rank and predictions to a separate answer sheet.
- There will be 15 game situations from professional games. It is always “black to play”. There are two minutes answering time for each situation (1 minute and 15 second time marks will be given).
- For each situation write down the coordinates of your five best predictions for the next move.
- You will get points for your correct predictions according to the following table. “Almost” correct predictions do not award points.

<b>Prediction</b>	1.	2.	3.	4.	5.
<b>Points</b>	6	4	3	2	1

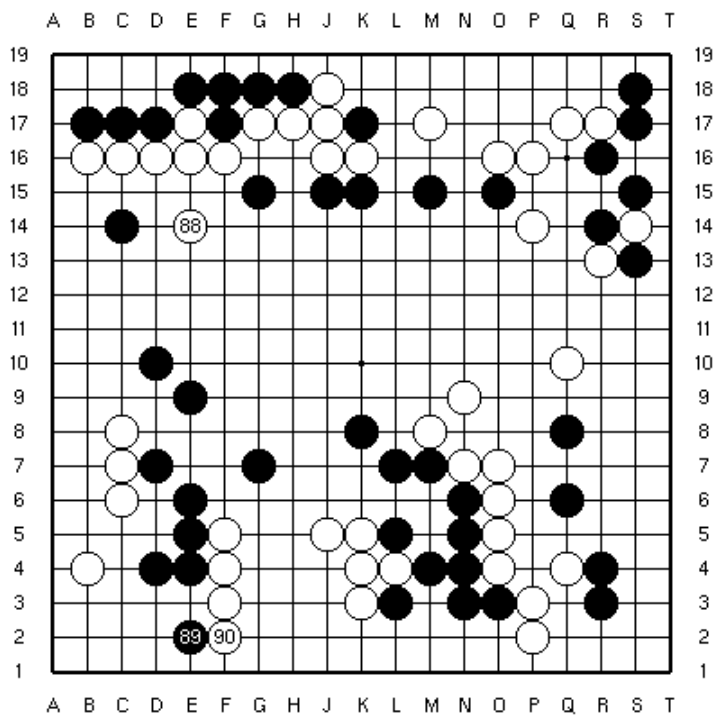
- The answers to this contest will be used in a study related to the average information content in a go game as well as to evaluate how strongly player’s rank correlates to his/hers ability to predict moves in high quality game records. If the results of this study prove to be worth of publication, no identifiable personal information will be included in a such publication.
- Thank you for your participation. If you have questions, comments or feedback, please feel free to email them to me: [esa.seuranen@tkk.fi](mailto:esa.seuranen@tkk.fi)



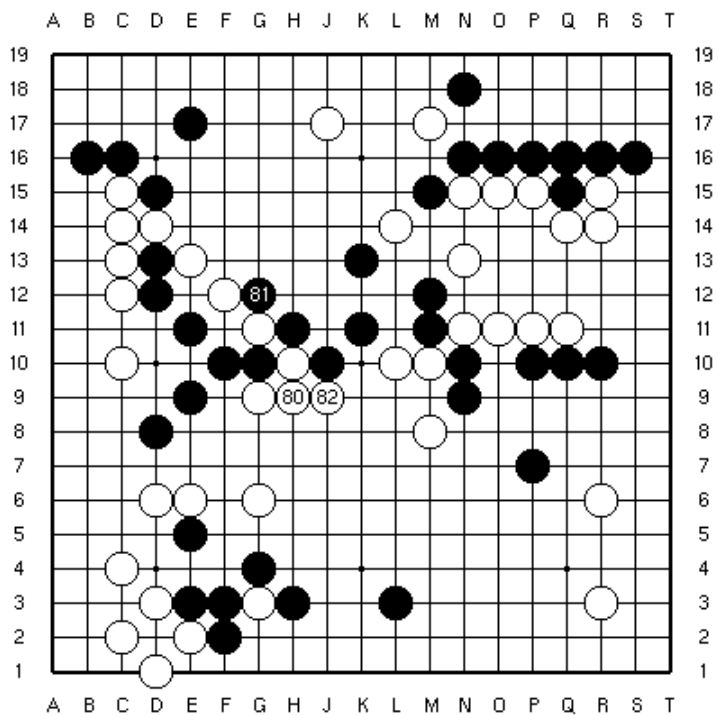
Game situation 2



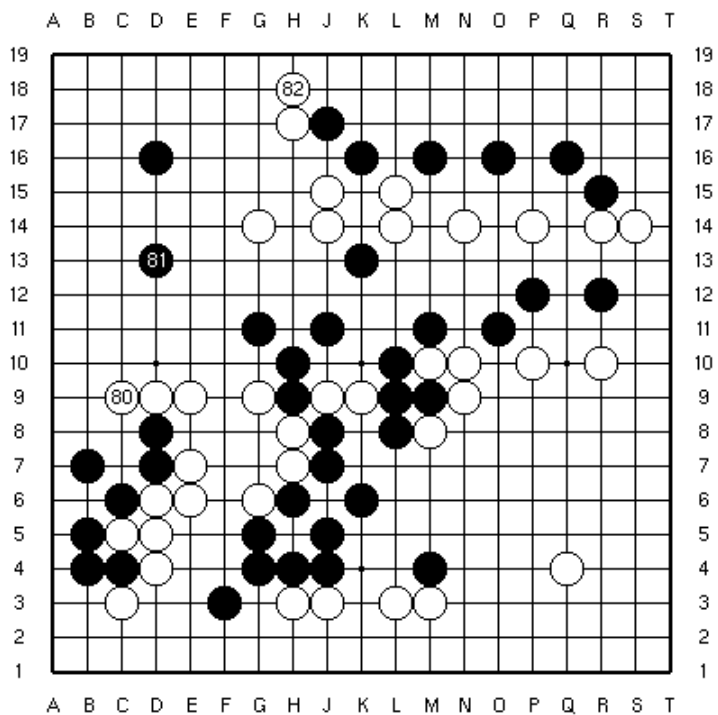
Game situation 1



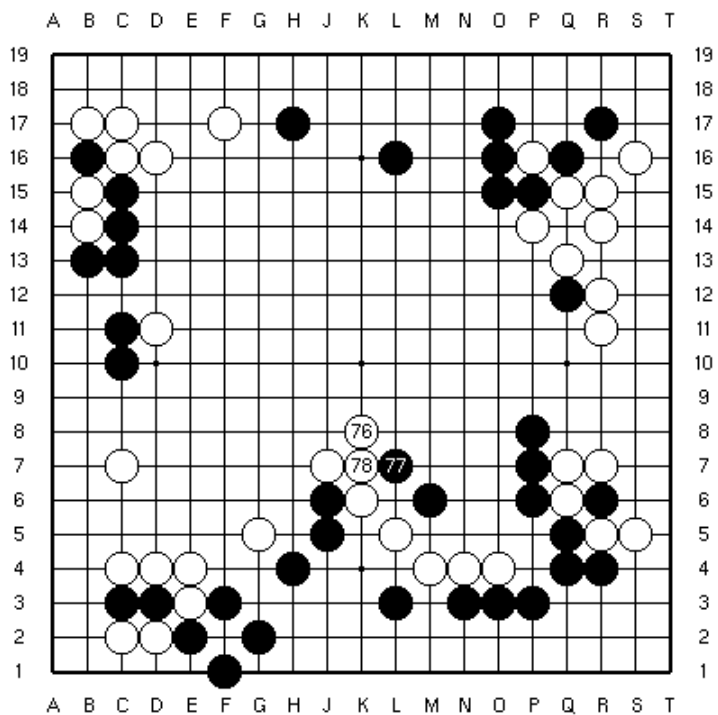
Game situation 3



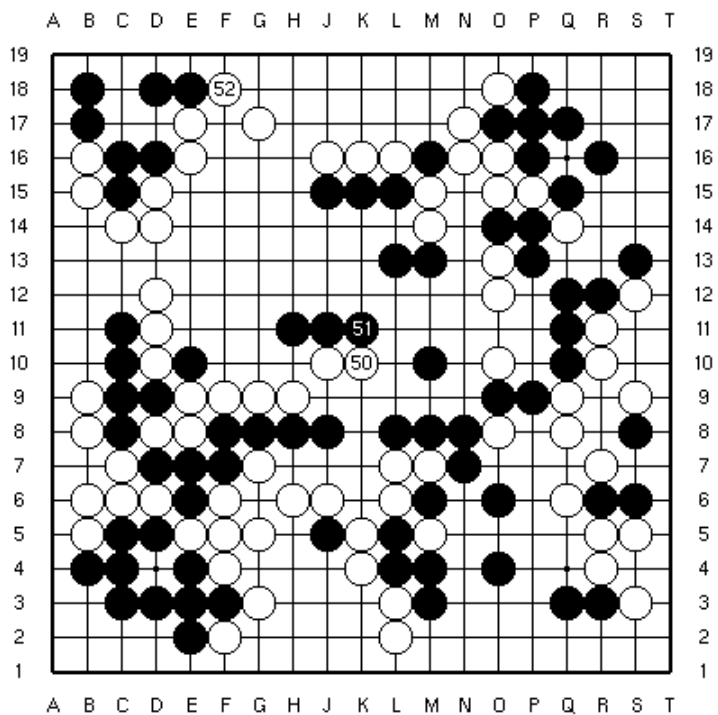
Game situation 4



Game situation 6

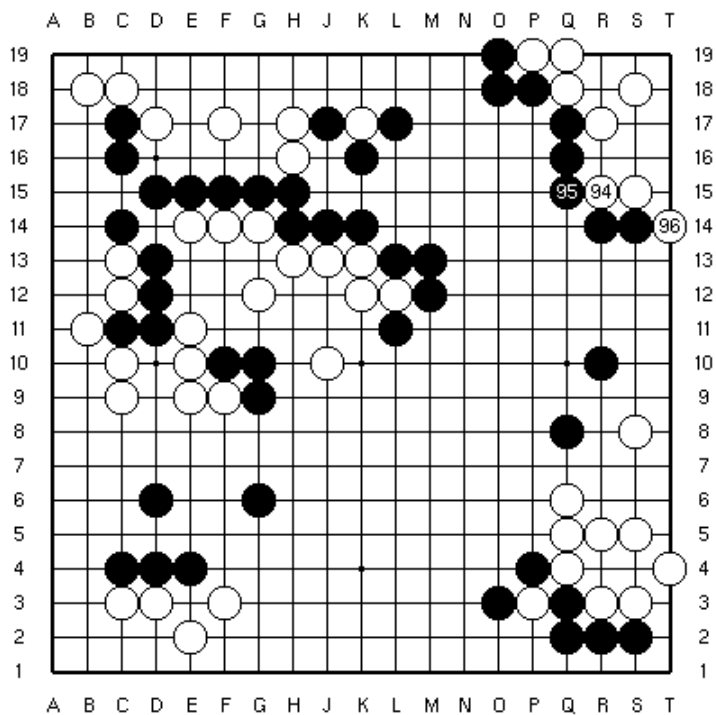


Game situation 5

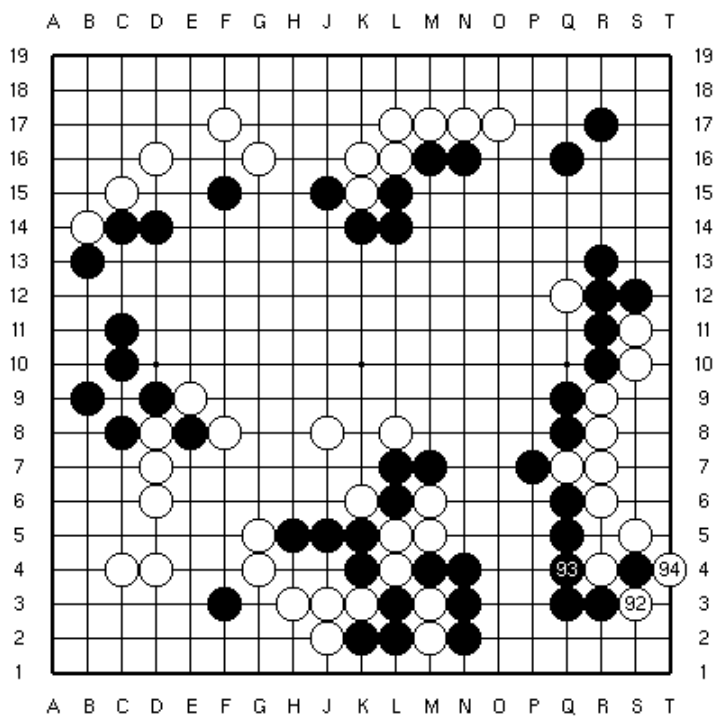


Game situation 7

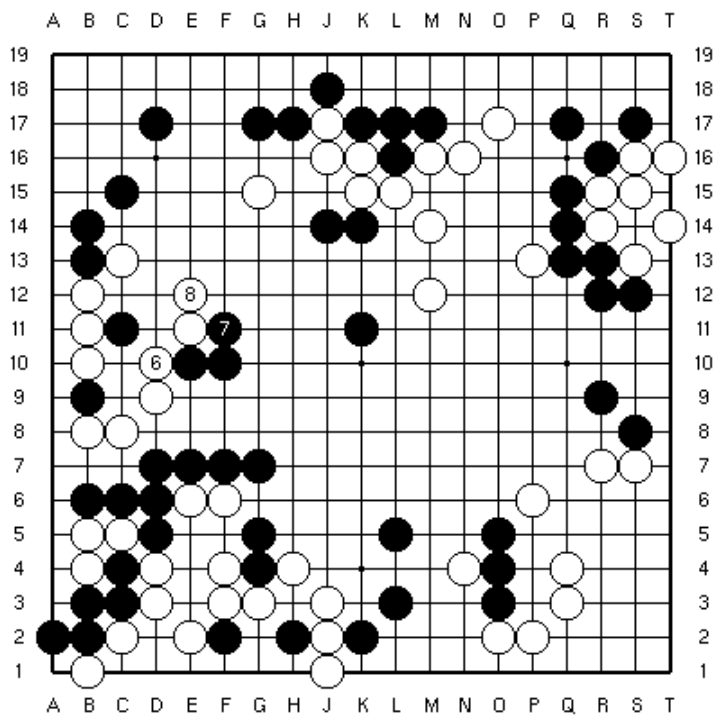




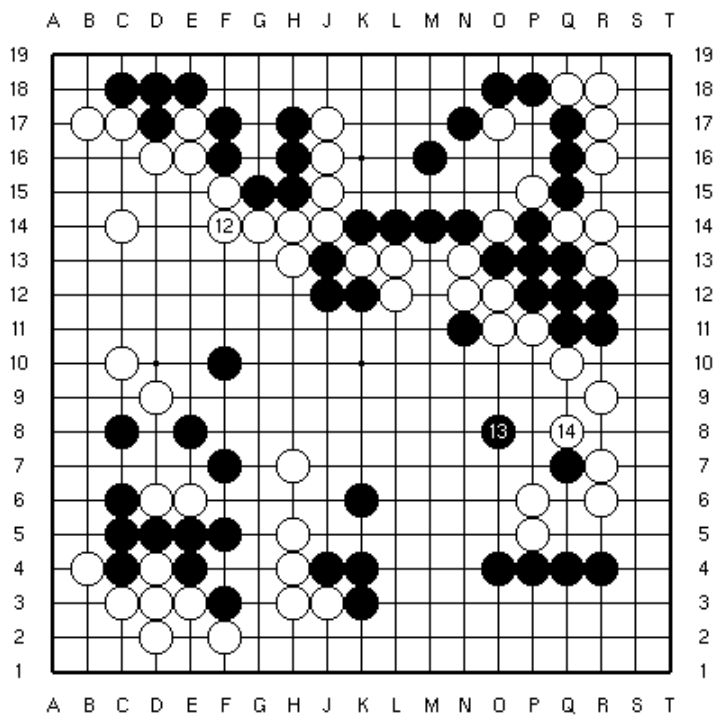
Game situation 8



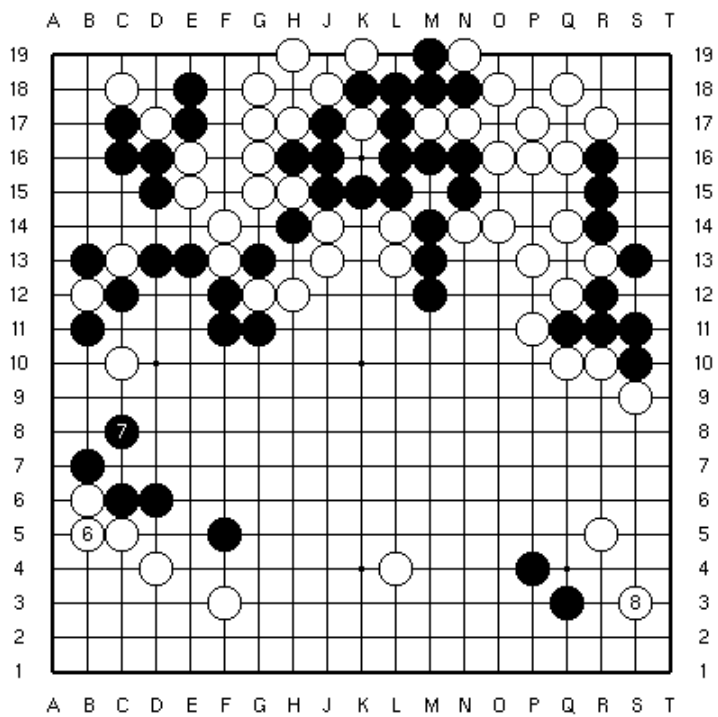
Game situation 10



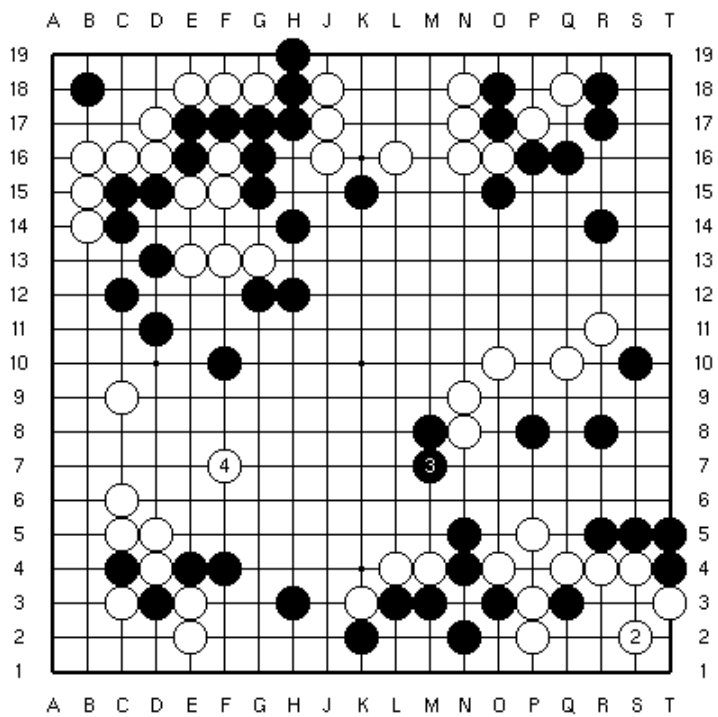
Game situation 9



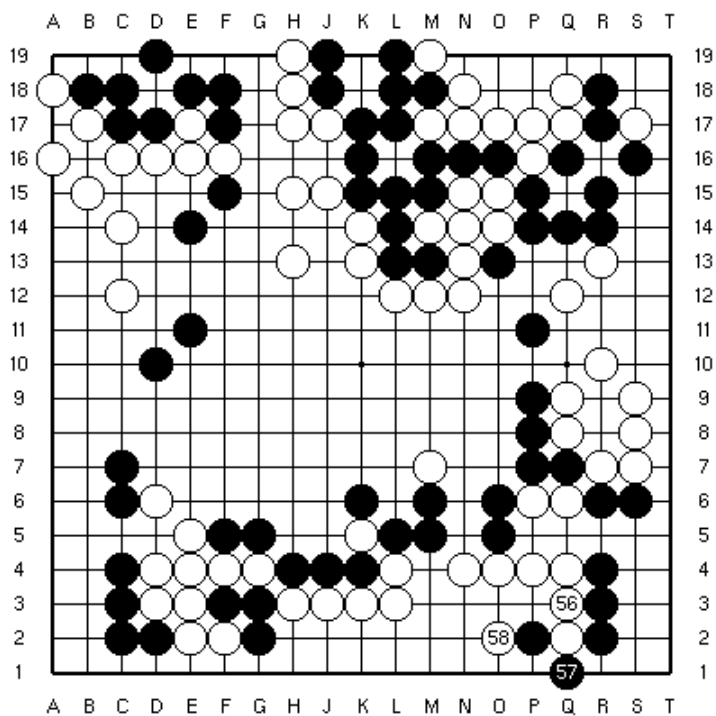
Game situation 11



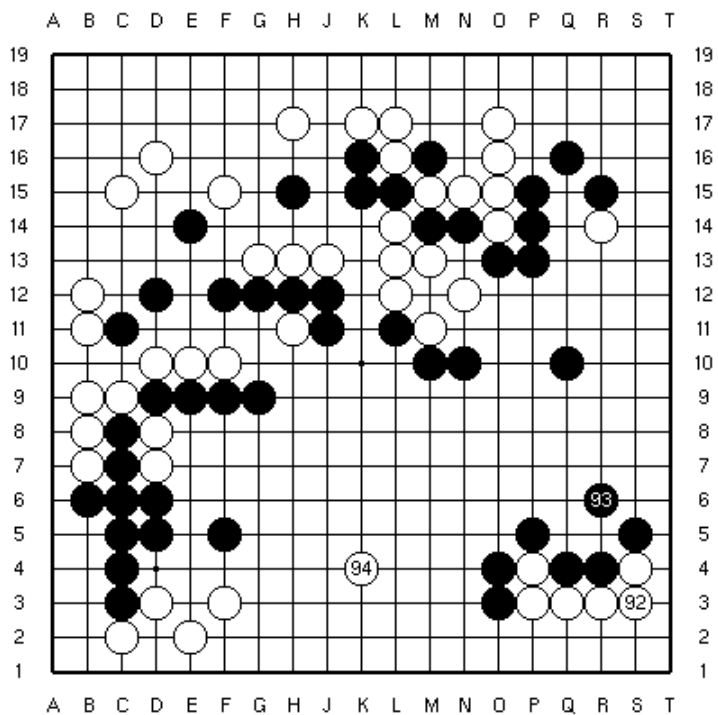
Game situation 12



Game situation 14



Game situation 13



Game situation 15